

'Tackling the Challenges' : Council Plan on a Page 2016-21

Vision: South Somerset: a place where businesses flourish, communities are safe, vibrant and healthy; where residents enjoy good housing and cultural, leisure and sporting activities.

Aims:

South Somerset will be a confident, resilient and flexible organization, protecting and improving core services, delivering public priorities and acting in the best long-term interests of the district. We will:

- Protect core services to the public by reducing costs and seeking income generation.
- Increase the focus on Jobs and Economic Development.
- Protect and enhance the quality of our environment.
- Enable housing to meet all needs.
- Improve health and reduce health inequalities.

Our Values:

- Putting the customer and community first when developing plans and services.
- Supporting people and communities, enabling them to help themselves.
- Being open, transparent and with greater accessibility to those that need to use council services.
- Working with partners to improve services, efficiencies, resilience and influence.
- Embracing innovation and improved technology to improve customer service and access.
- Empowering a confident, flexible workforce.

Our Priorities – Making a Difference Where it Counts

High quality cost effective services

In order to protect front line services we will:

- Transform customer services through technology.
- Actively manage assets and resources to ensure the best financial or community return.
- Seek business opportunities for the council.
- Work with partners to achieve economies, resilience and influence.

Economy

To promote a strong economy with thriving urban and rural businesses we will:

- Work with businesses and use our assets to grow our economy.
- Advise and support initiatives that ensure worker skills meet the employers needs.
- Lobby for and support infrastructure improvements to enable growth.
- Capitalise on our high quality culture, leisure and tourism opportunities to bring people to South Somerset.

Environment

To keep South Somerset clean, green and attractive we will:

- Increase recycling.
- Maintain Country Parks and open spaces to promote good mental and physical health.
- Keep streets and neighborhoods clean and attractive.
- Continue to address the impact of flooding.
- Promote a high quality built environment in line with Local Plan.
- Support communities to develop local, parish and neighbourhood plans.

Homes

To work with partners to enable the provision of housing that meets the future and existing needs of residents and employers we will:

- Minimise homelessness and rough sleeping.
- Work with the private rented sector to improve the standard and availability of rented accommodation.
- Tackle fuel poverty.
- Enable people to live independently for as long as they are able.

Health and Communities

To build healthy, self-reliant, active communities we will:

- Support communities so that they can identify their needs and develop local solutions.
- Target support to areas of need.
- Help people to live well by enabling quality cultural, leisure, play, sport & healthy lifestyle facilities & activities.
- Work with partners to tackle health issues such as diabetes and hypertension.
- Help keep our communities safe.

Appendix 1 : Annual Action Plan on a Page

Purpose: The Annual Plan outlines agreed high level actions for each year. It will be updated each year, with an annual monitoring report to Full Council.

Priority Levels: Council Plan delivery is designed to be flexible to allow urgent projects to be added mid-year. To aid flexibility, actions are prioritised as **High**, **Medium** and **Low**. Lower priority actions or those in italics will start when capacity allows, when the opportunity arises or if external resource is identified within the project plan.

Our plans for 2016-17

High quality cost effective services

- H** Commence the delivery of the Transformation programme
- H** Set up Income Generation Board and develop prioritised action plan.
- M** Optimise council assets to increase use or receive income.
- H** Take a full role in the emerging Devolution discussions to ensure the best outcome for South Somerset communities.
- H** Work with Sedgemoor District Council on the formation of a strategic alliance to increase influence, resilience and savings.

Economy

- H** Engage pro-actively with the LEP to maximise investment in South Somerset.
- H** Progress key strategic projects such as Lufton 2000 and Chard Regeneration.
- H** Agree a prioritised action plan to deliver local projects with Regeneration Boards.
- H** Progress the key infrastructure projects that unlock development.
- M** Support district-wide roll out of superfast broadband.
- H** Progress work hubs in Chard and Yeovil.
- H** Progress options to improve access /regeneration of Yeovil Town Centre.
- H** Continue to support intern and apprentice scheme.

Environment

- H** Agree a new waste and recycling collection model to enhance recycling and reduce costs.
- H** Maintain levels of street cleanliness and increase the joint work with parishes via the parish ranger scheme.
- H** Improve gateway to Ham Hill CP through road and high profile signage scheme.
- H** Increase visitor numbers (and YCP café income) via an exciting events programme.
- H** Diversify volunteering opportunities to increase capacity for projects in all Country Parks.
- M** Begin installing 4km of paths within our open spaces to improve 'access for all'.
- H** With SRA, deliver Enhanced Maintenance Programme.
- M** Deliver or enable a range of energy reduction projects

Homes

- H** Increase housing supply to meet local needs by the agreed investment of £2.4m.
- H** Contribute to the review of DFG effectiveness led by the Health and Wellbeing Board.
- H** Work with partners to secure supported hostel and move on accommodation for vulnerable individuals.
- M** Continue to bring empty properties back into use.
- M** Continue to work with CSE on fuel poverty schemes.
- M** Promote Careline to increase take up and enable people to continue living independently.
- M** Develop a Lettings Agency project.
- M** Explore an enhanced landlord accreditation scheme.

Health and Communities

- H** Support residents through national benefit changes including universal credit.
- H** Agree lease, refurbish and relaunch WLC Sport, Conference & Entertainment Facilities.
- H** Deliver Healthy lifestyles projects inc Yr 1 of project to deliver integrated interventions to those with diabetes and hypertension.
- M** Transfer Castle Cary Market House to community.
- H** Enable enhancement of at least 8 play & youth facilities.
- H** Support Huish Episcopi academy community swimming pool project.
- M** Work with partners on public sector hub in Yeovil.
- H** Support at least 50 community projects.
- H** Prepare a plan to develop & deliver leisure facilities in Chard.

Appendix 2 : South Somerset Today – A Snapshot Profile (2016) Purpose: The Council Plan addresses local needs. This summary identifies a number of key facts and figures about the district and suggests areas where we should be focusing our resources to make the maximum impact. Most of the data is taken from the JSNA which is a living document signed off by the Health and Wellbeing Board.

Our profile

Corporate

Resident population is 164,569.

Yeovil and Chard are the 2nd and 6th biggest towns in Somerset.

SSDC annual budget for 2016-17 is £17.3 million.

To balance the budget £9.98m has been found in savings since 2010/11.

SSDC needs to save £4.1m by 2020.

In 2006 SSDC had 646 FTE's. In 2016 there are now 420 FTE's.

Jobs

Workday population - 160,193.

South Somerset economy represents over 32% of Somerset's economic value.

5,480 businesses.

Productivity per job is around 85% of UK average.

HoSW ranks 38 out of 39 LEPs on innovation measures including patent registrations and Innovate UK funding.

Top industries are 1 Wholesale, retail, vehicle repair; 2 Manufacturing; 3 Health and social work; 4 Education and 5 Construction.

Somerset GCSE performance 53.8% A*-C (national 56).

Only 76% pupils in Somerset in education /training / employment the year after A levels.

Environment

1025 miles of streets and roads to clean.

76 houses flooded and Muchelney cut off for 10 weeks in 2013/14.

Lack of provision of green open space is linked to self-reported levels of health and mental health for all ages and socio-economic groups (Maas et al 2006).

Three Green Flag Country Parks covering 252Ha, with 100,000's visitors / year.

46.20% household waste reused, recycled and composted.

37,460 Customer transactions at Ninesprings café in 1st year.

48% of Somerset conservation areas are in South Somerset with 4500 listed buildings.

Homes

2072 registered on Homefinder Somerset, 277 in gold or emergency band (March 2016).

In 2013, the ratio of lowest quartile house prices to lowest quartile earnings was 6.9.

Average delivery of affordable housing over the past 4 years is 207/year.

Over the same period over £1m funding SSDC has levered in over £23m from HCA.

Health and Communities

We have a higher proportion of older residents than the national average: 12.8% 65-74yrs (England 9.5%); 10.9% over 75yrs (England 8.1%).

97.3% Somerset residents speak English as their main language.

34,419 of our population are aged 19 and under.

13.2% of children (15 and under) are in child poverty compared to 14.9% in Somerset, 16.2% in SW and 20.6% in England.

HoSW area performs poorly for mental health outcomes.

Some areas of Yeovil are in the 20% most deprived MSOAs in the county.

Above average levels of deprivation around Chard, Crewkerne, Wincanton, Castle Cary and Langport.

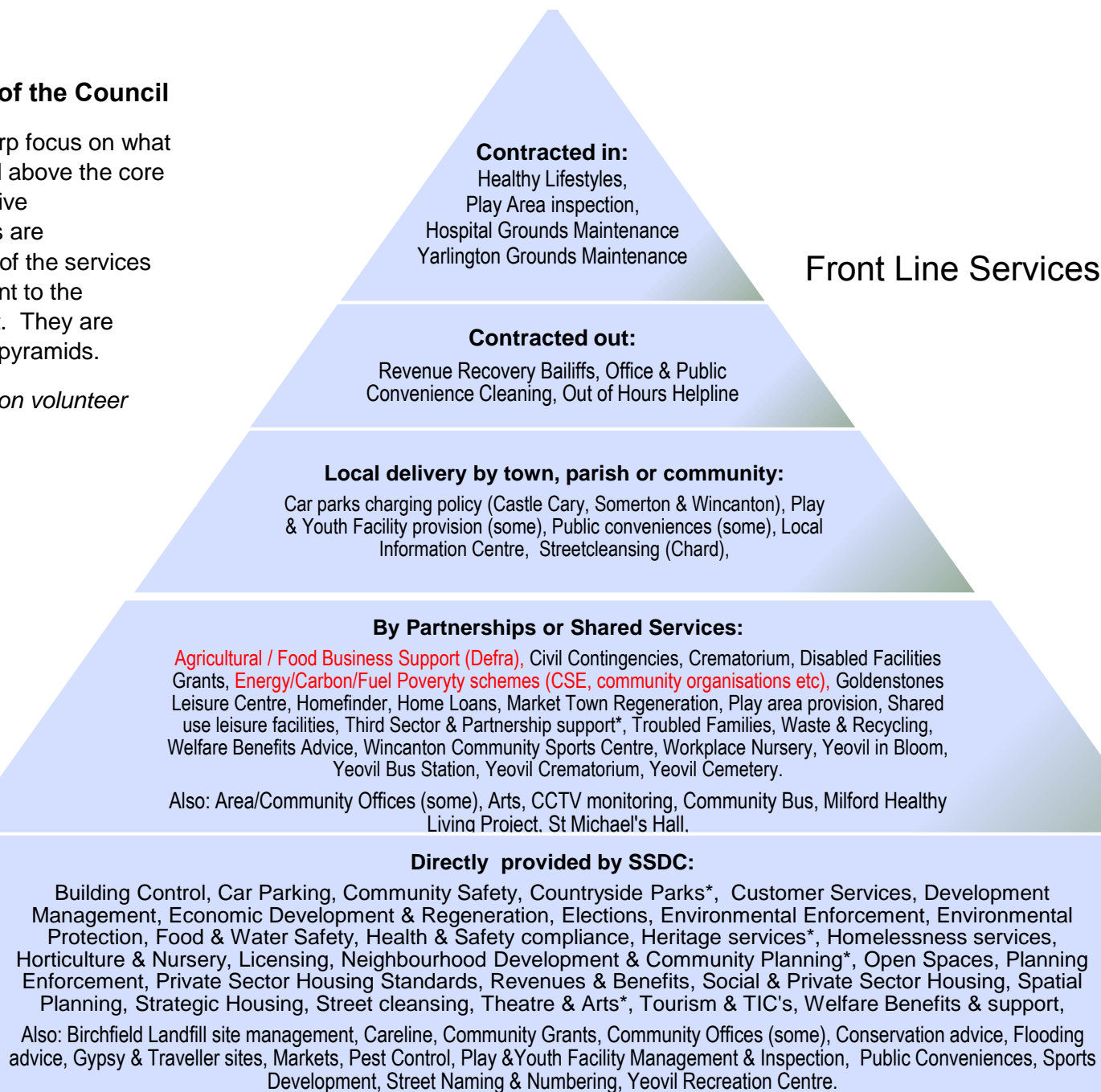
Sources

JSNA <http://www.informsomerset.org.uk> (references many data sources inc Somerset Economic Dashboard), Budget papers and 2010–16 savings summary <http://www.southsomerset.gov.uk/about-us/finance/> Housing data from Abris March 2016, Waste data from Q2 performance report December 2015 SWB)

Appendix 3 : Core work of the Council

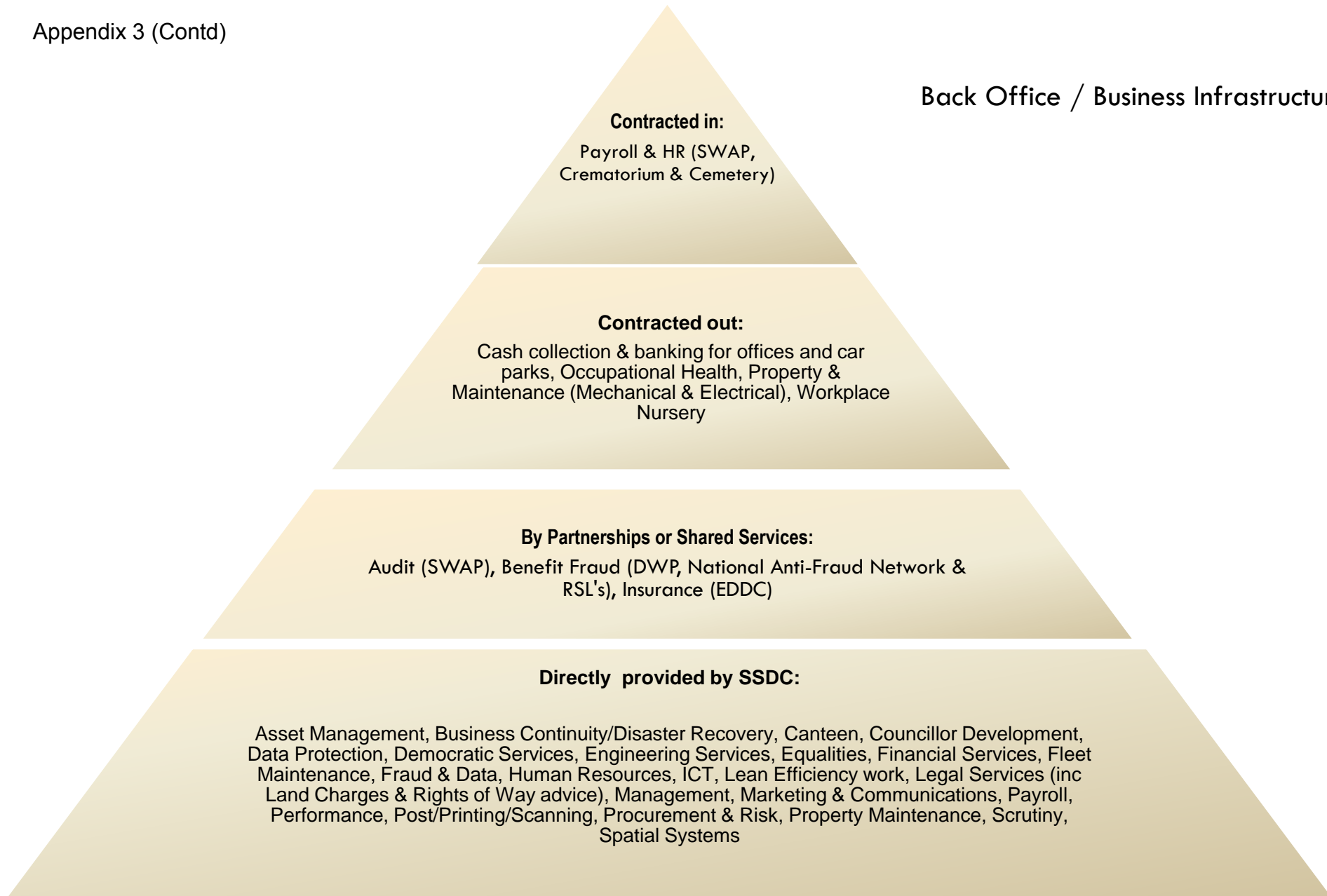
The Council Plan puts a sharp focus on what we want to achieve over and above the core council services in the next five years. Clearly, these targets are underpinned by the delivery of the services which are extremely important to the residents of South Somerset. They are outlined in the following two pyramids.

* Denotes services that rely on volunteer effort to succeed



Appendix 3 (Contd)

Back Office / Business Infrastructure



Glossary

| | | | |
|-------|--|-------|--|
| AGP | Artificial Grass Pitch | LED | (Used to be known as Leisure East Devon) |
| CCTV | Closed Circuit Television | LEP | Local Enterprise Partnership(s) |
| CLICK | Chard, Ilminster and Crewkerne GP Federation | MTIG | Market Towns Investment Group |
| CSE | Centre for Sustainable Energy | MSOA | Middle Layer Super Output Area (geographical area used for statistical purposes) |
| CP | Country Park | RSL's | Registered Social Landlords |
| DFG | Disabled Facility Grant | SASG | Strategic Asset Steering Group |
| Defra | Department of Farming and Rural Affairs | SDC | Sedgemoor District Council |
| DWP | Department of Work & Pensions | SRA | Somerset Rivers Authority |
| DX | District Executive | SSDC | South Somerset District Council |
| EDDC | East Devon District Council | SWB | Somerset Waste Board |
| HCA | Homes & Communities Agency | SWAP | South West Audit Partnership |
| HoSW | Heart of the South West (Devolution) | SWP | Somerset Waste Partnership |
| HR | Human Resources | TIC | Tourist Information Centre |
| JLAG | Joint Leaders Advisory Group (with Sedgemoor District Council) | WLC | Westlands Leisure Complex |
| JSNA | Joint Strategic Needs Assessment | YCP | Yeovil Country Park |

Partnerships that will support the delivery of the Council Plan

Blackdown Hills Area of Outstanding Natural Beauty
Chard Regeneration Scheme (Chard Vision)
Cranborne Chase and West Wiltshire Downs AONB
Heart of the South West (LEP)
Heart of Wessex Rail Partnership
Homefinder Somerset Partnership & Strategic IT
Market Towns Investment Group
Safer Somerset Partnership
Joint Leaders Advisory Group (Sedgemoor DC)
Somerset Armed Forces Community Covenant Partnership
Somerset Intelligence Partnership

Somerset Levels & Moors Local Action for Rural Communities
Somerset Local Authorities Civil Contingencies Partnership
Somerset Rivers Authority
Somerset Waste Partnership
Somerset Water Management Partnership
South Somerset Together (LSP)
South West Audit Partnership
Strategic Partnership Against Hate Crime
The Stop Line Way
Town & Parish Councils
Yeovil Vision